



江苏百思腾机械制造有限公司

JIANGSU BESTEN MACHINERY MANUFACTURE CO.,LTD

江苏百思腾机械制造有限公司

JIANGSU BESTEN MACHINERY MANUFACTURE CO.,LTD

ADD: NO.18 XINGYE ROAD,MINGJUE INDUSTRY
PARK,LISHUI DISTRICT,NANJING CITY,JIANGSU
PROVINCE,CHINA

MAIL:INFO@CNBESTEN.COM

TEL/WHATSAPP:+86 15751829726





关于我们 ABOUT US

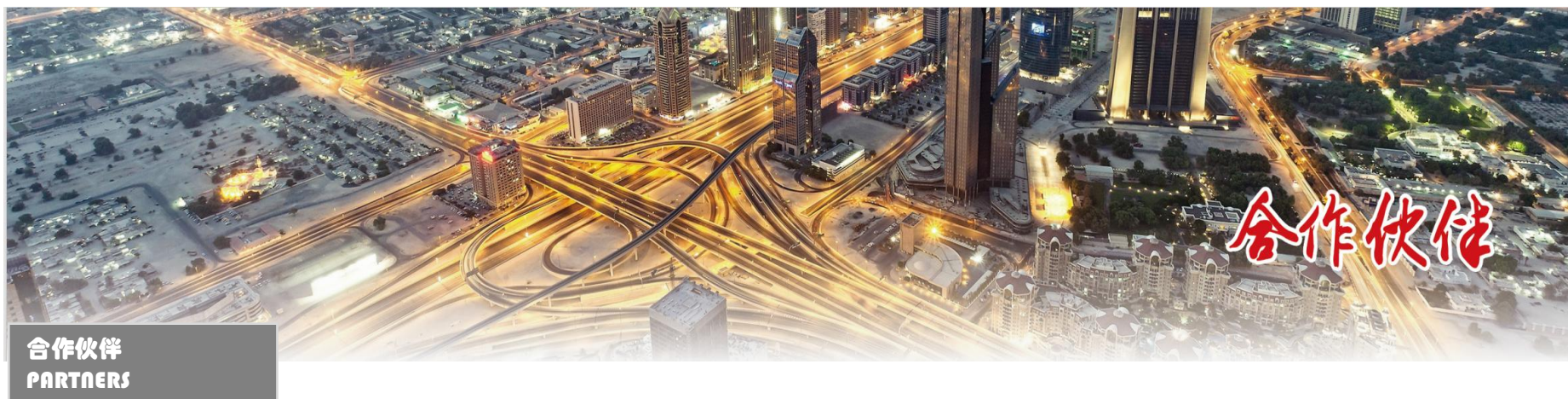


Jiangsu Besten Machinery manufacture CO.,LTD is located in the beautiful scenery of Nanjing city Lishui district Mingjue Industrial Park,plant area of 26000 square meters,registered capital of 36 million is professional engaged in the import,domestic generators,automatic generating sets,mute generator unit and mobile power plant production and sales of integrated industrial company.

BESTEN in the company has advanced production equipment,superb technical strength,rich experience in the design and production,complete testing methods,and strictly enforce the quality management system,to ensure that each product 100%qualified rate and the running reliability of the factory.At the same time,the company has a fast,perfect after-sales service system,so that the company's products in the fierce market competition,to win the trust of the majority of users.

Company's products are widely used in industrial and mining enterprises,forest pasture,post and telecommunications, construction, as well as hospitals,troops,fire and other units, can be used as a living power supply,can also be used as an emergency standby power supply.

"To the quality of survival,to the science and technology for development" is the enterprise culture of BESTEN in company,we will always do not shift the pursuit with first-class quality,first-class service and first-class technology of return customers,our honor is from the satisfaction of users and praise.



M 静音发电机组

UTE SERIES GENERATOR SET



- ① small volume,light weight,compact structure,novel and beautiful looks;
- ② The sound insulation cover with beautiful look,easy to disassembly and assembly,convenient operation;
- ③ Multi layer shielding impedance mismatch type sound insulation cover;
- ④ High efficiency noise reduction type multiple air intake and exhaust,air intake and exhaust channels,to ensure adequate power performance of the unit;

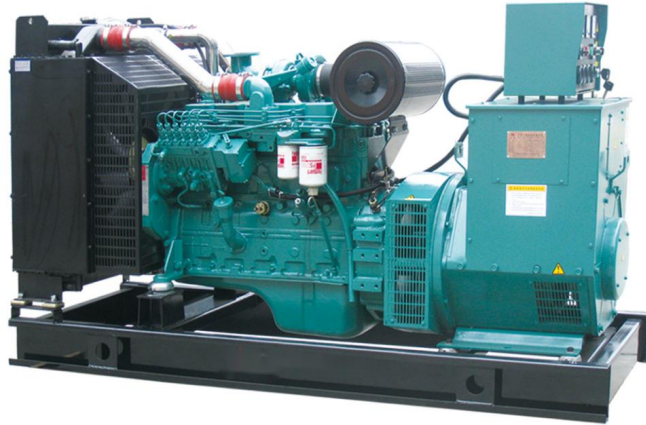
- ⑤ Good ventilation system and prevention of heat radiation to ensure that the unit is always working in the appropriate ambient temperature;
- ⑥ Special noise reduction and noise reduction materials are used to suppress the mechanical noise;
- ⑦ High efficiency vibration reduction measures to ensure the stable operation of diesel generator sets;
- ⑧ Automatic voltage regulator,excellent performance, reliable operation;
- ⑨ Large capacity unit fuel tank,can be used for continuous load operation for 8 hours;
- ⑩ The noise is reduced to 68dB(A)-75db(A)(from sound source 7m);

技术参数 Technical parameters

静音箱体 配套规格 Closed Silent Type (KW)	噪音指标 Noise index 7m测距 LP 7m	机组尺寸 长(L) 宽(W) 高(H)			燃油箱容量 Fuelbox volume 升(L)	重量 Weight 千克(KG)	常规配套机型注明 Conventional matching model indicate
10-30KW	65db	2200	1000	1460	140	420	配潍柴机组用 Supporting weichai Series
20-50KW	65db	2400	1000	1560	160	500	配潍柴及进口机组用 Supporting weichai or Import Brand Series
75-120KW	65db	3000	1240	1760	340	820	配潍柴及进口机组用 Supporting weichai or Import Brand Series
150-200KW	68db	3300	1400	1950	420	950	配潍柴及康明斯机组用 Supporting weichai or Cummins Series
150-300KW	68db	4000	1800	2150	720	1800	配上柴及进口机组用 (6缸) Supporting shanghai or Import Brand Series(6 Cylinder)
250-300KW	68db	4300	2100	2300	720	2000	配上柴12V135机组用 Supporting shanghai(12V 135)
400KW	68db	4700	2100	2450	750	2300	配上柴、无动、帕欧、康明斯机组用 (12V135) Supporting shanghai, wudong, paou, cummins(12V 135)
500KW	72db	4900	2250	2600	1000	2800	配上柴、无动、帕欧、康明斯机组用 (12V135) Supporting shanghai, wudong, paou, cummins(12V 135)
600-800KW	75db	6000	2400	2800	1300	3800	配康明斯机组用 Supporting cummins Series
600-1000KW	75db	9000	3000	3400	2500	7000	配济柴机组用 Supporting jichai Series

D 东风康明斯系列发电机组

DONGFENG CUMMINS SERIES GENERATING SET



Dongfeng Cummins Engine Co.,Ltd was founded in June 1996 by Dongfeng Motor Corporation and art Cummins company with the share of 50:50. In February 2003, through capital increase, the company became a Limited by Share Ltd of Dongfeng Automobile Diesel generator set Branch, the original Cummings owned Cummings(Xiangfan) machine company and Dongfeng and Cummings C series engine joint venture assets and management as one of a new joint venture company. The integrated module design of Dongfeng Cummins B/L/C series four stroke diesel engine has reduced the volume and weight of diesel engine,stable and reliable performance,and greatly reduced the failure rate and maintenance cost.The power range of the product is 24KW-242KW,and its reliability and advanced technology are all in the world.

机组 Genset										发动机 Engine								
机组型号 Genset Model	主用功率(主用) kW	备用功率(备用) kVA	主用功率(备用) kW	备用功率(备用) kVA	主用功率 Power (A)	备用功率 Power (A)	净重 Net Weight (kg)	机组外形尺寸 Overall Dimensions L x W x H (m)	发动机型号 Engine Type	品牌 Brand	主用功率 Power (KW)	备用功率 Power (KW)	缸数 No Of Cylinders	缸径/行程 Bore / Stroke (mm)	排气量 Exhaust Capacity (L)	压缩比 Compression Ratio	机油容量 Lubricant Capacity (L)	燃油消耗 Fuel Consumption (g/kw.h)
XHZC-200GF	200	250	220	275	360	396	2320	3.2*1.0*1.8	MTA11-G2	重庆 康明斯 CHONGQING CUMMINS	224	246	6	125X147	10.8	16.1:1	26.5/34	43.9
XHZC-200GF	200	250	220	275	360	396	2400	3.2*1.0*1.8	MTA11-G2A		234	257	6	125X147	10.8	16.1:1	26.5/34	46.8
XHZC-250GF	250	312.5	280	350	450	504	2500	3.2*1.0*1.8	MTAA11-G3		282	310	6	125X147	10.8	16.1:2	26.5/34	52.1
XHZC-200GF	200	250	220	275	360	396	2320	3.2*1.0*1.8	NTA855-GA		231	254	6	140X152	14	15.0:1	28.4/36	44.3
XHZC-220GF	220	275	250	312.5	396	450	2400	3.2*1.0*1.8	NTA855-G1		240	264	6	140X152	14	15.0:1	28.4/36	49.1
XHZC-220GF	220	275	250	312.5	396	450	2400	3.2*1.0*1.8	NTA855-G1A		264	291	6	140X152	14	15.0:1	28.4/36	50.9
XHZC-250GF	250	312.5	280	350	450	504	2500	3.2*1.0*1.8	NTA855-G1B		284	321	6	140X152	14	15.0:1	28.4/36	59.3
XHZC-250GF	250	312.5	280	350	450	504	2500	3.2*1.0*1.8	NTA855-G2		284	321	6	140X152	14	15.0:1	28.4/36	59.3
XHZC-275GF	275	343.75	300	375	495	540	2870	3.2*1.05*2.05	NTA855-G2A		312	343	6	140X152	14	15.0:1	28.4/36	44.3
XHZC-280GF	280	350	310	387.5	504	558	2870	3.4*1.05*2.05	NTA855-G4		317	351	6	140X152	14	15.0:1	28.4/36	62.5
XHZC-300GF	300	375	330	412.5	540	594	2900	3.4*1.05*2.05	NTAA855-G7		343	377	6	140X152	14	15.0:1	28.4/36	70.9
XHZC-360GF1	/	/	360	450	/	648	3000	3.5*1.05*2.05	NTAA855-G7A		/	407	6	140X152	14	15.0:1	28.4/36	74
XHZC-320GF	320	400	350	437.5	576	630	2900	3.4*1.05*2.05	QSNT-G3		358	392	6	140X152	14	15.0:1	28.4/36	44.3
XHZC-300GF	300	375	320	400	540	576	2870	3.4*1.05*2.05	KTA19-G2		336	369	6	159X159	19	14.5:1	32.2/37.9	71
XHZC-360GF	360	450	400	500	648	720	3860	3.65*1.23*2.15	KTA19-G3		403	448	6	159X159	19	14.5:1	32.2/37.9	82
XHZC-400GF	400	500	450	562.5	720	810	3800	3.65*1.23*2.15	KTA19-G3A		448	504	6	159X159	19	14.5:1	32.2/37.9	91
XHZC-400GF	400	500	450	562.5	720	810	3885	3.65*1.23*2.15	KTA19-G4		448	504	6	159X159	19	14.5:1	32.2/37.9	91
XHZC-420GF	420	525	505	631.25	756	909	4310	3.85*1.53*2.27	KTA19-G5		470	555	6	159X159	19	14.5:1	32.2/37.9	96
XHZC-460GF	460	575	520	650	828	936	4310	3.85*1.53*2.27	KTA19-G6		520	570	6	159X159	19	14.5:1	32.2/37.9	112
XHZC-520GF1	/	/	520	687.5	/	936	4400	4.0*1.53*2.27	KTA19-G8		/	575	6	159X159	19	14.5:1	32.2/37.9	120
XHZC-550GF1	/	/	550	700	/	990	4400	4.0*1.53*2.27	KTA19-G6A		/	610	6	159X159	19	14.5:1	32.2/37.9	132
XHZC-520GF	520	650	570	712.5	936	1026	4480	3.85*1.53*2.27	OSKTA19-G4 NR2		574	634	6	159X159	19	14.5:1	32.2/37.9	116.2
XHZC-500GF	500	625	560	700	900	1008	6520	4.3*1.62*2.37	KT38-G	560	616	12	159X159	38	14.5:1	87.1/113.6	119	
XHZC-580GF	580	725	640	800	1044	1152	6580	4.3*1.62*2.37	KT38-GA	647	711	12	159X159	38	14.5:1	87.1/113.6	157	
XHZC-570GF	570	712.5	630	787.5	1026	1134	6580	4.3*1.62*2.37	KTA38-G1	634	701	12	159X159	38	14.5:1	87.1/113.6	136	
XHZC-600GF	600	750	660	825	1080	1188	6580	4.3*1.62*2.37	KTA38-G2	664	731	12	159X159	38	14.5:1	87.1/113.6	156	
XHZC-640GF	640	800	710	887.5	1152	1278	6840	4.3*1.62*2.37	KTA38-G2B	711	790	12	159X159	38	14.5:1	87.1/113.6	156	
XHZC-728GF	728	910	800	1000	1310.4	1440	6840	4.3*1.62*2.37	KTA38-G2A	813	896	12	159X159	38	14.5:1	87.1/113.6	165	
XHZC-800GF	800	1000	880	1100	1440	1584	7375	4.55*1.85*2.45	KTA38-G5	881	970	12	159X159	38	14.5:1	87.1/113.6	178	
XHZC-100GF1	/	/	1000	1250	/	1800	7500	4.4*1.85*2.6	KTA38-G9	/	1090	12	159X159	38	14.5:1	87.1/113.6	211	
XHZC-1000GF	1000	1250	1100	1375	1800	1980	8505	4.54*2.11*2.76	QSK38-G5	1107	1224	12	159X159	38	14.5:1	87.1/113.6	227	
XHZC-1000GF	1000	1250	1100	1375	1800	1980	9210	5.12*2.04*2.64	KTA50-G3	1097	1227	16	159X159	50	13.9:1	121.1/151.4	222	
XHZC-1100GF	1100	1375	1320	1650	1980	2376	9570	5.12*2.04*2.7	KTA50-G8	1200	1429	16	159X159	50	13.9:1	121.1/151.4	248	
XHZC-1180GF	1180	1475	1320	1650	2124	2376	9570	5.12*2.04*2.7	KTA50-GS8	1287	1429	16	159X159	50	13.9:1	121.1/151.4	248	

Y 玉柴系列发电机组

YUCHAI SERIES GENERATING SET

Yuchai Machinery Limited by Share Ltd is the domestic largest specialized manufacturer of diesel engines,the quality of their products,grades have an international brand position,Xinhua Yuchai series generating units supporting has the advantages of compact structure,high power reserve,stable operation,good speed performance,low emissions, high reliability and other advantages,the engine overhaul period more than 10000 hours to get unanimous approval.



机组 Genset										发动机 Engine									
机组型号 Genset Model	主用功率(主用) kW	备用功率(备用) kVA	主用功率(主用) kW	备用功率(备用) kVA	主用功率(主用) Power (A)	备用功率(备用) Power (A)	净重 Net Weight (kg)	机组外形尺寸 Overall Dimensions L x W x H (mm)	品牌 Brand	发动机型号 Engine Type	主用功率 Power (kW)	备用功率 Power (kW)	缸数 No. of Cylinders	缸径/行程 Bore / Stroke (mm)	排量 Exhaust Capacity (L/h)	压缩比 Compression Ratio	机油容量 Lubricating Capacity (L)	燃油消耗 Fuel Consumption (g/kWh)	
XH2Y-30GF	30	37.5	33	41.25	54	59.4	500	1.4×0.6×0.8	玉柴 YUCHAI	YC4B55-D39	36	39.6	4	87×103	2.449	17.5:1	9	≤225	
XH2Y-40GF	40	50	45	56.25	72	81	700	1.65×0.65×1.15		YC4FA75-D30	50	55	4	96×103	2.982	17.5:1	8	≤205	
XH2Y-50GF	50	62.5	55	68.75	90	99	750	1.90×0.8×1.2		YC4D90-D31	60	66	4	108×115	4.214	17.5:1	8	≤205	
XH2Y-60GF	60	75	66	82.5	108	118.8	800	1.90×0.8×1.2		YC4D105-D31	70	77	4	108×115	4.214	17.5:1	8	≤205	
XH2Y-64GF	64	80	72	90	115.2	129.6	850	1.90×0.8×1.2		YC4D115-D31	77	85	4	108×115	4.214	17.5:1	8	≤205	
XH2Y-75GF	75	93.75	85	106.25	135	153	900	1.90×0.8×1.4		YC4A140-D31	95	105	4	108×132	4.84	17.5:1	13	≤210	
XH2Y-80GF	80	112.5	100	125	162	180	950	1.90×0.8×1.4		YC4A155-D31	103	113	4	108×132	4.84	17.5:1	13	≤210	
XH2Y-100GF	100	125	120	150	180	216	1000	1.90×0.8×1.4		YC4A180-D31	120	132	4	108×132	4.84	17.5:1	13	≤210	
XH2Y-100GF	100	125	120	150	180	216	1200	2.2×0.9×1.4		YC6A190-D30	125	138	6	108×132	7.25	17.5:1	21	≤200	
XH2Y-120GF	120	150	132	165	216	237.6	1300	2.3×0.9×1.4		YC6A205-D30	138	152	6	108×132	7.25	17.5:1	21	≤200	
XH2Y-140GF	140	175	150	187.5	252	270	1400	2.4×0.9×1.4		YC6A230-D30	155	171	6	108×132	7.25	17.5:1	21	≤200	
XH2Y-150GF	150	187.5	160	200	270	288	1500	2.5×0.9×1.4		YC6A245-D30	165	181	6	108×132	7.25	17.5:1	21	≤200	
XH2Y-160GF	160	200	180	225	288	324	1600	2.2×0.9×1.4		YC6G270-D30	180	198	6	112×132	7.81	17.5:1	24	≤215	
XH2Y-200GF	200	250	220	275	360	396	2000	3.0×0.9×1.8		YC6M350-D30	235	259	6	123×145	10.34	16.8:1	28	≤195	
XH2Y-250GF	250	312.5	280	350	450	504	2200	3.0×0.9×1.8		YC6M420-D30	281	309	6	123×145	10.34	16.8:1	28	≤195	
XH2Y-300GF	300	375	340	425	540	612	2400	3.0×0.9×1.8		YC6K500-D30	335	370	6	129×155	12.16	14.5:1	32	≤192	
XH2Y-320GF	320	400	350	437.5	576	630	3000	3.0×0.9×1.8		YC6K520-D30	356	382	6	129×155	12.16	14.5:1	32	≤192	
XH2Y-360GF	360	450	400	500	648	720	3500	3.0×0.9×1.8		YC6K570-D30	389	420	6	129×165	12.94	14.5:1	32	≤192	
XH2Y-400GF	400	500	450	562.5	720	810	3800	3.0×1.1×2.0		YC6T660-D30, YC6T660-D31	441	485	6	145×165	16.35	14.1:1	52	≤205	
XH2Y-450GF	450	562.5	500	625	810	900	5200	3.2×1.2×2.1		YC6T780-D30, YC6T780-D31	520	572	6	152×180	19.60	14.1:1	52	≤205	
XH2Y-500GF	500	625	550	687.5	900	990	5500	3.2×1.2×2.1		YC6T840-D30, YC6T840-D31	561	616	6	152×180	19.60	14.1:1	52	≤205	
XH2Y-550GF	550	687.5	600	750	990	1080	6000	3.2×1.2×2.1		YC6T900-D31	605	665	6	152×180	19.60	14.1:1	52	≤205	
XH2Y-600GF	600	750	660	825	1080	1188	8000	4.5×1.4×2.6		YC6C1020-D31	680	748	6	200×210	39.58	14.5:1	180	≤210	
XH2Y-650GF	650	812.5	700	875	1170	1260	8200	4.5×1.4×2.6		YC6C1070-D31	715	787	6	200×210	39.58	14.5:1	180	≤210	
XH2Y-720GF	720	900	800	1000	1296	1440	8500	4.5×1.4×2.6		YC6C1220-D31	815	897	6	200×210	39.58	14.5:1	180	≤210	
XH2Y-800GF	800	1000	900	1125	1440	1620	9000	4.5×1.4×2.6		YC6C1320-D31	890	968	6	200×210	39.58	14.5:1	180	≤210	
XH2Y-900GF	900	1125	1000	1250	1620	1800	9500	4.5×1.4×2.6		YC6C1520-D31	1016	1118	6	200×210	39.58	14.5:1	180	≤210	
XH2Y-1000GF	1000	1250	1100	1375	1800	1980	14000	4.9×1.7×2.6		YC12VC1680-D30, YC12VC1680-D31	1120	1230	12	200×210	79.17	13.5:1	280	≤203	
XH2Y-1250GF	1250	1562.5	1400	1750	2250	2520	14500	4.9×1.7×2.6		YC12VC2070-D30, YC12VC2070-D31	1360	1520	12	200×210	79.17	13.5:1	280	≤203	
XH2Y-1400GF	1400	1750	1500	1875	2520	2700	15000	4.9×1.7×2.6		YC12VC2270-D30, YC12VC2270-D31	1520	1670	12	200×210	79.17	13.5:1	280	≤203	
XH2Y-1500GF	1500	1875	1680	2100	2700	3024	16000	5.0×1.75×2.65		YC12VC2510-D30, YC12VC2510-D31	1680	1850	12	200×210	79.17	13.5:1	280	≤203	
XH2Y-1600GF	1600	2000	1800	2250	2880	3240	16500	5.0×1.8×2.65		YC12VC2700-D30, YC12VC2700-D31	1805	1985	12	200×210	79.17	13.5:1	280	≤203	
XH2Y-1800GF	1800	2250	200	250	3240	360	17000	5.2×1.8×2.65		YC16VC2960-D30, YC16VC2960-D31	1980	2178	16	200×210	105.56	13.5:1	370	≤203	
XH2Y-2000GF	2000	2500	2200	2750	3600	3960	18000	5.2×1.8×2.65		YC16VC3300-D30, YC16VC3300-D31	2200	2420	16	200×210	105.56	13.5:1	370	≤203	
XH2Y-2200GF	2200	2750	2400	3000	3960	4320	19000	5.3×1.8×2.7	YC16VC3600-D30, YC16VC3600-D31	2400	2640	16	200×210	105.56	13.5:1	370	≤203		
XH2Y-16GF	16	20	18	22.5	28.8	32.4	700	1.65×0.65×1.15	玉柴 YUCHAI	YC4F35-D21	21	23	4	92×100	2.66	17.5:1	8	≤235	
XH2Y-20GF	20	25	24	30	36	43.2	720	1.65×0.65×1.15		YC4FA40Z-D20	28	30.8	4	96×103	2.982	17.5:1	8	≤225	
XH2Y-30GF	30	37.5	35	43.75	54	63	750	1.7×0.65×1.2		YC4FA55Z-D20	36.8	40.5	4	96×103	2.982	17.5:1	8	≤225	
XH2Y-40GF	40	50	44	55	72	79.2	800	1.7×0.65×1.2		YC4FA75L-D20	50	55	4	96×103	2.982	17.5:1	8	≤210	
XH2Y-30GF	30	37.5	35	43.75	54	63	858	1.85×0.70×1.20		YC4D60-D21	40	44	4	106×115	4.214	17.5:1	13	≤205	
XH2Y-50GF	50	62.5	55	68.75	90	99	868	1.85×0.70×1.20		YC4D95Z-D20	55	60.5	4	106×115	4.214	17.5:1	13	≤200	
XH2Y-50GF	50	62.5	55	68.75	90	99	872	1.85×0.70×1.20		YC4D90Z-D21	50	55	4	106×115	4.214	17.5:1	13	≤200	
XH2Y-60GF	56	70	60	75	100.8	108	930	1.90×0.7×1.2		YC4A100Z-D20	70	73.5	4	106×132	4.837	17.5:1	13	≤215	
XH2Y-75GF	75	93.75	85	106.25	135	153	1328	2.30×0.90×1.30		YC6B135Z-D20	90	99	6	106×125	6.871	17.5:1	18	≤230	
XH2Y-90GF	90	112.5	100	125	162	180	1378	2.40×0.90×1.38		YC6B158L-D20	103	113	6	106×125	6.871	17.5:1	18	≤225	
XH2Y-100GF	100	125	110	137.5	180	198	1378	2.50×0.90×1.40		YC6B180L-D20	120	132	6	106×125	6.871	17.5:1	18	≤225	
XH2Y-120GF	120	150	140	175	216	252	1520	2.50×0.90×1.40		YC6B205L-D20	138	152	6	106×125	6.871	17.5:1	18	≤225	
XH2Y-120GF	120	150	132	165	216	237.6	1520	2.50×0.90×1.40		YC6A200L-D20	132	145	6	106×132	7.255	17.5:1	21	≤210	
XH2Y-120GF	120	150	140	175	216	252	1520	2.50×0.90×1.40		YC6A210L-D20	132	145	6	106×132	7.255	17.5:1	21	≤210	
XH2Y-132GF	132	165	150	187.5	237.6	270	1554	2.50×0.85×1.45		YC6A230L-D20	155	170.5	6	106×132	7.255	17.5:1	21	≤215	
XH2Y-150GF	150	187.5	160	200	270	288	1554	2.5×0.85×1.45		YC6G245L-D20	165	181.5	6	112×132	7.8	16.8:1	24	≤225	
XH2Y-200GF	200	250	220	275	360	396	2046	2.90×1.0×1.65		YC6M350L-D20	235	258.5	6	123×145	10.338	16.8:1	30	≤215	
XH2Y-280GF	280	312.5	280	350	450	504	2108	2.93×1.05×1.75		YC6M420L-D20	281	309	6	123×145	10.338	16.8:1	30	≤215	
XH2Y-300GF	300	375	320	400	540	576	2256	2.93×1.05×1.75		YC6M480L-D20	321	352	6	131×145	10.338	16.8:1	30	≤215	
XH2Y-300GF	300	375	320	400	540	576	2256	2.93×1.05×1.75		YC6M500L-D20	334	367	6	131×145	10.338	16.8:1	30	≤215	
XH2Y-320GF	320	400	350	437.5	576	630	3525	3.55×1.23×1.80		YC6T550L-D21	368	405	6	145×165	16.35	15:1	52	≤225	
XH2Y-360GF	360	450	400	500	648	720	3735	3.52×1.23×1.80		YC6T600L-D22	401	441	6	145×165	16.35	15:1	52	≤225	
XH2Y-400GF	400	500	440	550	720	792	3735	3.52×1.23×1.80		YC6T660L-D20	441	485	6	145×165	16.35	15:1	52	≤225	
XH2Y-420GF	420	525	460	562.5	756	840	3800	3.52×1.23×1.80		YC6T700L-D20	460	506	6	145×165	16.35	15:1	52	≤225	
XH2Y-450GF	450	562.5	500	625	810	900	3900	3.62×1.23×1.90		YC6T780L-D20	520	572	6	152×180	19.598	14.1:1	60	≤225	
XH2Y-500GF	500	625	550	687.5	900	990	4000	3.70×1.23×2.00		YC6T840L-D20	561	617	6	152×180	19.598	14.1:1	60	≤225	
XH2Y-600GF	600	750	660	825	1080	1188	8500	4.30×1.70×2.4		YC6C1020L-D20	680	748	6	200×210	39.584	14.5:1	175	≤220	
XH2Y-650GF	650	812.5	710	887.5	1170	1278	8550	4.30×1.70×2.4	YC6C1070L										

S 上柴系列发电机组

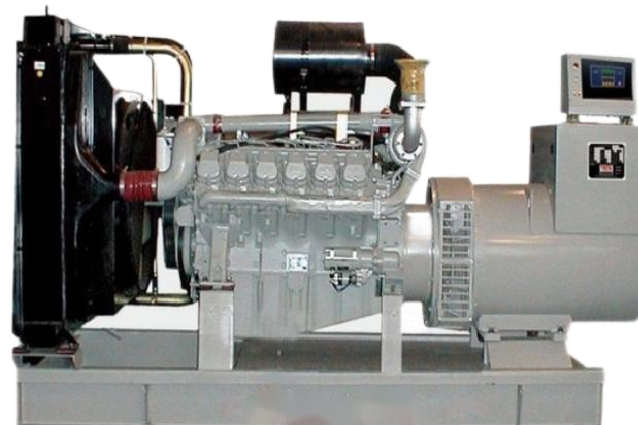
SHANGCHAI SERIES GENERATING SET



Shanghai Diesel Engine is the listed company held by Shanghai Automotive Group, its 135, G128, SC-D and SC-C series engine are the new generation of products developed with the technology from USA Caterpillar Inc. and AVL Corp., they are improved on the basis of original products, with the merits such as superior power performance, advanced discharge index, low oil consumption, high reliability and so on. They are preferred by the supporting fixed power station and reserve power. Meanwhile, SDEC after-sale service covering all over the country can provide the considerate service for customers.

L 菱重系列发电机组

LINGZHONG SERIES GENERATING SET



Shanghai Lingzhong engine is made by Shanghai diesel engine co., LTD., a joint venture with Japan's Mitsubishi heavy industry co., LTD produces, the main production by Mitsubishi heavy industries technology licensing S6R2 S12R/S16R series engine in all size. This series of unit has high regulating voltage accuracy, good dynamic performance, less voltage waveform distortion, high efficiency, reliable operation, long service life, good economic performance. Unit configuration full maintenance-free battery startup system, users only need injection engine oil and coolant, can start after the cathode to switch units, output power, greatly improve the convenience of use.

机组 Genset								发动机 Engine										
机组型号 Genset Model	主用功率(主用) kW		备用功率(备用) kW		主用电流 Power (A)	备用电流 Power (A)	净重 Net Weight (kg)	机组外形尺寸 Overall Dimensions L×W×H (mm)	发动机型号 Engine Type	品牌 Brand	主用功率 Power (KW)	备用功率 Power (KW)	缸数 No. of Cylinders	缸径/行程 Bore / Stroke (mm)	排量 Exhaust Capacity (L)	压缩比 Compression Ratio	机油容量 Lubricating Capacity (L)	燃油耗 Fuel Consumption (g/kw.h)
XHZS-55GF	55	68.75	60	75	99	108	1350	2.1*0.8*1.35	SC4H95D2	上柴 SDEC	62	68	4	105x124	4.3	17.3	13	200
XHZS-70GF	70	87.5	80	100	126	144	1520	2.1*0.9*1.6	SC4H115D2		78	86	4	105x124	4.3	17.3	13	200
XHZS-90GF	90	112.5	100	125	162	180	1805	2.6*0.9*1.4	SC4H160D2		105	116	4	105x124	4.3	16	13	195
XHZS-110GF	110	137.5	120	150	198	216	1900	2.7*0.9*1.4	SC4H180D2		120	132	4	105x124	4.3	16	13	195
XHZS-140GF	140	175	150	187.5	252	270	2005	2.6*0.9*1.7	SC7H230D2		154	170	6	105x124	6.44	16	17.5	195
XHZS-150GF	150	187.5	165	206.25	270	297	2100	2.6*0.9*1.7	SC7H250D2		168	185	6	105x124	6.44	16	17.5	195
XHZS-160GF	160	200	180	225	288	324	2200	2.9*1.15*1.7	SC8D280D2		185	204	6	114x135	8.27	18	19	200
XHZS-180GF	180	225	200	250	324	360	2400	3.0*1.15*1.7	SC9D310D2		208	228	6	114x144	8.82	18	19	197
XHZS-200GF	200	250	220	275	360	396	2300	3.0*1.2*1.75	SC9D340D2		228	255	6	114x144	8.82	16.5	25	195
XHZS-180GF	180	225	200	250	324	360	2283	2.9*1.15*1.7	SC13G280D2		187	206	6	135x150	12.88	15.75	41	205
XHZS-200GF	200	250	220	275	360	396	2290	2.9*1.15*1.8	SC13G310D2		206	227	6	135x150	12.88	15.75	41	205
XHZS-220GF	220	275	250	312.5	396	450	2388	3.0*1.25*1.8	SC13G355D2		236	260	6	135x150	12.88	15.55	41	200
XHZS-250GF	250	312.5	300	375	450	540	2415	3.0*1.45*1.8	SC13G420D2		280	308	6	135x150	12.88	15.55	41	200
XHZS-320GF	320	400	350	437.5	576	630	3450	3.3*1.25*2.0	SC15G500D2		330	373	6	135x165	14.16	15.55	41	200
XHZS-360GF	360	450	400	500	648	720	3675	3.5*1.4*2.0	SC25G610D2		405	445	12	135x150	25.8	16	65	202
XHZS-400GF	400	500	450	562.5	720	810	3675	3.5*1.45*2.0	SC25G690D2		459	505	12	135x150	25.8	16	65	202
XHZS-450GF	450	562.5	500	625	810	900	4005	3.6*1.45*2.04	SC27G755D2		505	555	12	135x155	26.6	16	65	202
XHZS-500GF	500	625	550	687.5	900	990	4500	4.0*1.6*2.04	SC27G830D2		565	610	12	135x155	26.6	16	65	202
XHZS-280GF	280	350	300	375	504	540	3370	3.25*1.3*1.95	SC12E460D2		307	338	6	128x153	11.8	17	41	195
XHZS-320GF	320	400	350	437.5	576	630	3650	3.46*1.35*2.0	SC12E500D3		338	373	6	128x153	11.8	17	41	195
XHZS-600GF	600	750	660	825	1080	1188	4600	4.6*1.6*2.08	SC33W990D2	菱重 LINGZHONG	660	726	6	180x215	32.8	15	75	205
XHZS-800GF1	/	/	800	1000	/	1440	4800	4.7*1.6*2.1	SC33W1150D2		782	860	6	180x215	32.8	15	75	205
XHZL-500GF	500	625	550	687.5	900	990	5500	4.4*2.2*2.2	S6R2-PTA-C		575	635	6	170x220	29.96	14.1: 1	92	195
XHZL-600GF	600	750	660	825	1080	1188	5800	4.5*2.2*2.2	S6R2-PTAA-C		645	710	6	170x220	29.96	14.1: 1	92	206
XHZL-1000GF	1000	1250	1100	1375	1800	1980	11000	4.9*2.2*2.4	S12R-PTA-C		1080	1190	12	170x180	49.03	14.0: 1	180	197
XHZL-1100GF	1100	1375	1210	1512.5	1980	2178	11500	5.0*2.2*2.4	S12R-PTA2-C		1165	1285	12	170x180	49.03	13.5: 1	180	197
XHZL-1200GF	1200	1500	1300	1625	2160	2340	12000	4.8*2.2*2.4	S12R-PTAA2-C		1277	1404	16	170x180	49.03	13.5: 1	180	221
XHZL-1300GF	1300	1625	1430	1787.5	2340	2574	12500	5.4*2.2*2.8	S16R-PTA-C		1450	1590	16	170x180	65.37	14.0: 1	230	214
XHZL-1500GF	1500	1875	1600	2000	2700	2880	13000	5.6*2.2*2.8	S16R-PTA2-C		1600	1760	16	170x180	65.37	13.5: 1	230	216
XHZL-1600GF	1600	2000	1800	2250	2880	3240	13500	5.7*2.2*2.8	S16R-PTAA2-C		1684	1895	16	170x180	65.37	14.0: 1	230	217

R 防雨型电站

RAINPROOF TYPE POWER STATION



Suitable for construction of open fixed site, may prevent from the rain, snow, and storm. Convenient installation, simple operation, with good application effects.

T 通柴系列发电机组

LINGZHONG SERIES GENERATING SET



Tongchai series diesel engines introduce into the combustion technology of Austria AVL Co.,Ltd,enhancing the cold start performance and power of the diesel engines,lower fuel consumption,noise level and exhaust level,stronger reliability.The big-power engines(V type)with Intellectualized LCD panel can with many protection functions,is a perfect high configuration standard;among Jichai 190 Series,Z12V190B diesel engine is the only one product of Winningnational quality gold medal in the domestic-made high-speed and big-power engines family,the generator sets are widely used in oil industry,mining and industrial enterprises,and are well received by users for their high performance cost ratio.

机组 Genset										发动机 Engine									
机组型号 Genset Model	主用功率(主用) kW	备用功率(备用) kVA	主用功率(主用) kW	备用功率(备用) kVA	主用功率(主用) Power (A)	备用功率(备用) Power (A)	净重 Net Weight (kg)	机组外形尺寸 Overall Dimensions L x W x H (mm)	发动机型号 Engine Type	品牌 Brand	主用功率 Power (KW)	备用功率 Power (KW)	缸数 No of Cylinders	缸径/行程 Bore / Stroke (mm)	排气量 Exhaust Capacity (L)	压缩比 Compression Ratio	机油容量 Lubricating Capacity	燃油耗 Fuel Consumption (g/kw.h)	
XHZT-100GF	100	125	110	137.5	180	198	2000	2.7x0.90x1.70	6135AD	南通飞翰或 上海帕欧 TONGCHAI	110	121	6	135x150	12.9	17.0:1	28.7	≤220	
XHZT-120GF	120	150	132	165	216	238	2000	2.7x0.90x1.70	6135ZD		110	154	6	135x140	12	16.0:1	28.7	≤215	
XHZT-150GF1	140	175	150	187.5	252	270	2000	2.7x0.90x1.70	6135AZD		162	178	6	135x150	12.9	16.0:1	28.7	≤215	
XHZT-150GF	150	187.5	165	206.3	270	297	2600	3.05x1.25x2.00	NT129ZA17		167	184	6	135x160	13.74	16.0:1	28.7	≤208	
XHZT-180GF	180	225	200	250	324	360	2600	3.05x1.25x2.00	NT129LA21		206	227	6	135x160	13.74	16.0:1	28.7	≤208	
XHZT-200GF	200	250	220	275	361	397	2650	3.05x1.25x2.00	NT137LR22		220	242	6	135x160	13.74	16.0:1	28.7	≤208	
XHZT-220GF	220	275	250	312.5	397	450	3200	3.05x1.25x2.00	NT1144U25		254	279	6	135x168	16	17.0:1	28.7	≤208	
XHZT-280GF	280	350	300	375	504	540	3300	3.05x1.25x2.00	NT151LU30		301	331	6	135x168	16	17.0:1	28.7	≤208	
XHZT-300GF	300	375	330	412.5	540	594	3180	3.10x1.25x2.00	NT151LU33		330	363	6	135x150	16	17.0:1	28.7	≤208	
XHZT-280GF	280	350	310	387.5	504	558	3370	3.30x1.50x1.95	J258Z31		310	340	6	135x150	25.7	17.0:1	57.4	≤215	
XHZT-300GF	300	375	330	412.5	540	594	3525	3.50x1.40x1.81	J258Z33		331	364	12	138x168	25.4	17.0:1	57.4	≤215	
XHZT-330GF	330	412.5	360	450	594	650	3300	3.20x1.25x1.95	NK151LU38		380	418	12	138x168	15.1	15.0:1	40	≤215	
XHZT-360GF	360	437.5	400	500	630	720	3300	3.18x1.25x2.00	NK151LU40		402	440	6	135x155	16	19.0:1	58.7	≤208	
XHZT-360GF	360	450	400	500	650	722	3760	3.45x1.32x1.90	NT271ZV440		400	440	6	135x155	26.4	15.6:1	57.4	≤215	
XHZT-380GF1	380	475	420	525	684	756	3800	3.50x1.32x1.90	NT271ZV42		418	482	12	135x158	26.4	15.6:1	57.4	≤215	
XHZT-420GF	420	525	460	575	756	828	3950	3.52x1.52x1.90	NT283ZV46		459	505	12	135x158	26.4	17.0:1	80	≤218	
XHZT-440GF1	440	550	480	600	792	864	4000	3.60x1.57x1.90	NT283ZV48		482	530	12	135x155	26.4	17.0:1	80	≤218	
XHZT-460GF	460	575	510	637.5	828	918	3950	3.52x1.57x1.90	NT271LV51		507	558	12	135x155	27.12	15.6:1	80	≤218	
XHZT-470GF1	470	587.5	520	650	846	936	4100	3.60x1.57x1.90	NT271LV52		520	572	12	135x155	27.12	15.6:1	80	≤218	
XHZT-480GF	480	600	530	662.5	854	954	4150	3.62x1.57x1.90	NT271LV53		530	583	12	138x158	27.12	15.6:1	80	≤218	
XHZT-500GF1	500	625	550	687.5	900	990	4000	3.60x1.57x1.90	TC283LV55		550	605	12	138x158	28.32	15.6:1	80	≤218	
XHZT-500GF	500	625	560	700	900	1008	4325	3.57x1.66x1.90	TC283LV56		561	617	12	138x158	28.32	15.6:1	80	≤218	
XHZT-530GF1	530	662.5	580	725	954	1044	4400	3.60x1.66x2.10	TC283LV58		582	640	12	138x158	28.32	15.6:1	80	≤218	
XHZT-550GF	550	687.5	590	737.5	990	1062	4325	3.75x1.66x2.10	TC283LV59		588	647	12	138x158	28.32	17.0:1	80	≤218	
XHZT-560GF1	550	687.5	590	737.5	990	1062	4325	3.57x1.66x2.10	TC283LV61		610	671	12V	138x158	28.32	17.0:1	80	≤218	
XHZT-560GF	560	700	620	775	1008	1116	4325	3.75x1.66x2.10	TC283LV62		618	680	12	138x158	28.32	17.0:1	80	≤218	
XHZT-580GF1	580	725	640	800	1044	1152	4400	3.75x1.66x2.10	TC283LV64		704	640	12	138x158	28.32	17.0:1	80	≤218	
XHZT-600GF	600	750	660	825	1080	1188	4790	3.70x1.76x2.10	TC296LM66		660	726	12	138x158	28.32	17.0:1	80	≤218	
XHZT-620GF1	620	775	680	850	1116	1224	4800	3.70x1.76x2.10	TC296LM68		682	750	12	138x165	28.32	17.0:1	80	≤218	
XHZT-680GF1	680	850	750	937.5	1224	1350	4910	3.70x1.76x2.10	TC296LM75		750	825	12	138x165	28.32	17.0:1	80	≤218	
XHZT-720GF	720	900	800	1000	1260	1440	5200	4.07x1.76x2.37	NK286LV61		808	888	6	138x165	29.6	14.77:1	80	≤218	
XHZT-750GF	750	937.5	830	1062	1350	1494	5300	4.20x1.73x2.37	NK286LV83		827	910	12	138x165	29.6	14.77:1	80	≤218	
XHZT-800GF	800	1000	880	1100	1440	1584	5500	4.40x1.76x2.37	TC296LM88		880	968	12	138x165	29.6	14.77:1	80	≤218	
XHZT-200GF1	/	/	200	250	/	360	2500	2.2x0.9x1.85	TCR200		200	230	6	135x150	12.9	17	25	≤224	
XHZT-250GF1	/	/	250	312.5	/	450	2600	2.2x0.9x1.85	TCR250		250	275	6	135x150	12.9	17	25	≤224	
XHZT-300GF1	/	/	300	375	/	540	3500	3.3x1.3x1.95	TCR300		300	330	6	135x168	14.4	17	25	≤198	
XHZT-360GF1	/	/	360	450	/	648	3600	3.3x1.3x1.95	TCR360		360	396	6	138x168	15.1	17	25	≤198	
XHZT-400GF1	/	/	400	500	/	720	3800	3.5x1.3x1.95	TCR400		400	440	6	138x168	15.1	17	25	≤198	
XHZT-450GF1	/	/	450	562.5	/	810	4000	3.5x1.3x1.95	TCR450		450	495	6	138x168	15.1	17	25	≤215	
XHZT-500GF1	/	/	500	625	/	900	4200	3.5x1.3x1.95	TCR500		500	550	6	138x168	15.1	17	40	≤215	
XHZT-550GF1	/	/	550	687.5	/	990	4400	4.0x1.6x1.65	TCR550		550	605	12V	135x158	28.3	17	50	≤198	
XHZT-600GF1	/	/	600	750	/	1080	4500	4.0x1.6x1.65	TCR600		600	660	12V	135x158	28.3	17	50	≤198	
XHZT-750GF1	/	/	750	937.5	/	1350	5000	4.0x1.6x1.65	TCR750		750	825	12V	138x158	28.3	17	50	≤198	
XHZT-800GF1	/	/	800	1000	/	1440	5200	4.0x1.6x1.65	TCR800		800	880	12V	138x165	29.6	17	50	≤198	
XHZT-1000GF1	/	/	1000	1250	/	1800	5200	4.5x2.0x2.6	TCR1000		1000	1100	12V	138x165	29.6	17	50	≤218	
XHZT-1200GF1	/	/	1200	1500	/	2160	5376	4.5x2.0x2.6	TCR1200		1200	1320	12V	138x165	29.6	17	50	≤218	

M 移动/拖车系列发电机组

MOTION/TOW TRUCK SERIES



- 1.For the frequent mobile or field work power supply;
- 2.Divided into two wheel or four wheel shaft structure;
- 3.With spring shock absorption and double brake device,to ensure the safety of the movement;
- 4.Traction:the use of active hook,flexible,easy to operate;
- 5.Brake:With a reliable hand pull type brake system,to ensure the safety of traffic (optional air brake);
- 6.Doors and windows:all open doors and windows,can provide personnel operation and equipment testing.
- 7.Size:Size basing the specification, the operator can be around ,ease of operation and maintenance;
- 8.External appearance:paint with polymer polyurethane paint,color can be customized ;
- 9.Supporting an integrated fuel tank(for 8hours 100% fullload working) ;
- 10.Optional installation of cable winch or terminal box;



BESTEN movable generating plant is special movable power supply designed for field operating,the framework of plant adopts beam channel welding to be framework structure,the joint selection is rational with high strength and good rigidity,meanwhile,it also is installed with steel plate spring suspending mechanism.The outer casing is made of super-quality steel plate galvanized,which owns characteristic of excellent corrosive-proof and sealing performance,the window of four sides adopts auto hydraulic supporting,with simply opening.The chassis wheel can be designed to be two-wheel,four-wheel and six-wheel according to user demand,while,there are manual,pneumatic and hydraulic driving braking devices provided for selection by user.Besides,this plant also can be installed with standard plug of direction and braking indicator lamp,for guaranteeing that machine set conforms to safety standard of road driving.

A 自动化控制系统

AUTOMATION CONTROL SYSTEM

基本型控制系统 Control System of Basic Type

发动机部分：配有钥匙启动、高低速开关、发动机水温表、油温表、电流表、计时器等。

发电机部分：配有电流表、电压表、频率表、断路器。

Engine: equipped with start key, high low speed switch, engine water-thermometer, oil temperature gauge, amperemeter, calculagraph

Generator: equipped with amperemeter, Voltmeter, frequencymeter, disconnector and so on.



自启动型控制系统 Control System of Auto Start Type

采用 XHZ 知名品牌控制系统。当市电停电时（或者其它机组启动的信号），经延时确认（0~30s 可调），机组自动启动（1~8 次可调，首次启动成功率 > 99%），自动确认发电机组正常后，向负载供电。市电恢复正常后，经延时确认（0~30s 可调），自动冷却停机（0~300s 可调）。同时具有基本型的保护功能，数字显示电压、电流、频率、运行时间、电池、电压、转速等参数。

Adopt domestic imported control system. When mains stop, or or receive start signals of other generating set, after it confirmed the delay(0~30 seconds adjustable),the generating set will automatically start(1~8 times adjustable , successful rate of the first start is more than 99%), then after self confirmation of normal supply of the set, it will supply power to the load . as the mains get recovered , it will cool itself and stop the set (0~300 seconds adjustable) after delay confirmation (0~30 seconds adjustable),. Meanwhile, this type has protection functions of the basic type , and digital display of parameters of voltage, current frequency , running time ,battery ,voltage ,rotary speed ,etc.



ATS(自动转换)型控制系统 Automatic Transfer Control System of ATS Type

内装高品质转换开关、控制电器，面板上装有指示灯，与自动型控制柜配合，可实现市电、发电自动转换供电功能。在正常使用状态下，控制箱与市电相连，控制箱内的浮充电器自动充电，保证启动用蓄电池的正常工作。在电网断电、欠压、缺相时，发电机组自动启动，启动成功后，控制箱控制自动转换柜的转换开关，切换供电电路，当市电恢复正常，自动转换开关转换到市电供电，并控制发电机组空载运行至发动机温度平衡并降低后，自动停机。

Inside installation of high quality transfer switch.The panel of the control electrical has indicators.Fitted with the automatical type control cabinet, the auto supply systembetween the urban power and the generator can be achieved. Under normal operation,the control is connecteg with the urban power,the inside electrical auto charged to ensure normal operation of the storage battery for start. In case of stop of supply of urban power, insufficient voltage,lack of phase,the generator will auto start,after completion of start,the change switch inside the auto change cabinet will cut off the urban supply.After normal supply of the urban power,the switch into the supply of urban power, and control the set run freely until balance and decrease of engine,auto stop.



并车系统 Paralleling System

有手动、自动和全自动三种。

全自动并机柜采用先进的控制模块，可控制装有各种型号调速器的发电机组，可保证机组负荷分配差度不大于 5%，自动负载均衡，智能化控制器控制的自动调度，负载变化时的自动投入，解列以及应急自动启动、投入等。

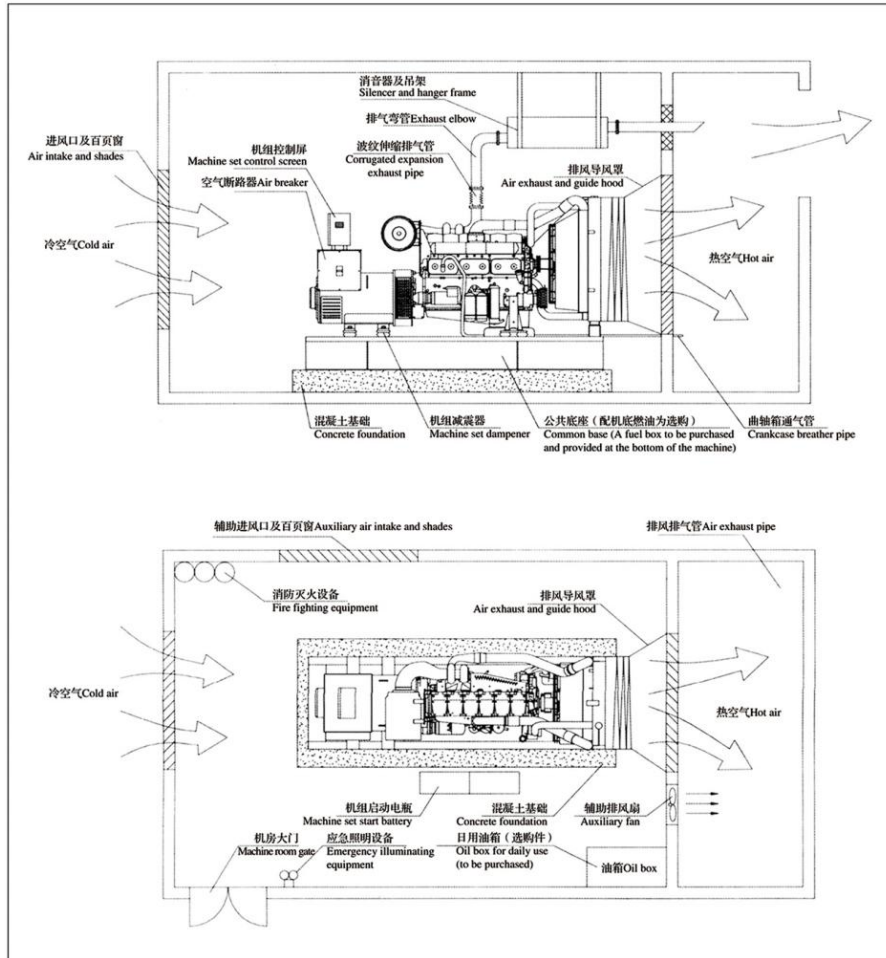
Three selections of Manual,Auto,and Full-auto.

Automatic grid control adopts the intelligent, import program PLC,controlling all types of speed adjustors installed inside the generator set,ensuring the difference of load sharing no more than 5%,Itmay auto distrib-ute loads,arrangement of PLC,autoinput and decouple in case of change of loads,and emergency auto start ang input,etc.



机房布置

LAYOUT&DRAWING



Above diagram shows the standard machine room and installation methods recommended by BESTEN the correct operations like installing the exhaust tubes and crankcase air tube, selecting the lubricating oil, fueling and cooling fluid like anti-freezing fluid or antirust fluid are vital to the correct use and output rated power of generating set contact our technical service department for details.

S 服务承诺

SERVICE&PROMISES

Q 质量保证

QUALITY INSURANCE

BESTEN has set up the independent customer service department, which is responsible for providing the warranty of various diesel generating sets that have troubles within warranty.

A 售后服务

AFTER-SALE SERVICE

BESTEN offers the one year or 1000h working time warranty of the generator. We also offer the 7*24h hotline online service. If needed, we can also send engineers' oversea installation and training.

B 售前服务

SERVICE BEFORE SALES

Free charge on providing with burden capacity analysis category selection technology consultation, assistance with machinery room collocation and facilities installation planning.

T 培训

TRAINING

For helping user to master the operation, usage and the maintenance of different kinds of generators correctly, we offer the training service for free charge.